

# SP14 Asphalt Anchor Installation Guide

This guide is aimed at the installer of Designated Parking Corp barriers. The barrier kits are equipped with anchors suitable for mounting to concrete surfaces.

Asphalt is a relatively weak surface, and care must be taken when making permanent installations of barriers to that surface. Additional information on this topic can be found on our web site [www.designatedparking.com](http://www.designatedparking.com)

For the most reliable installation pour concrete footing, then install concrete anchors .

For normal duty applications, the barrier's mounting plates can be attached to the surface using a combination of adhesive (DPC EPX1) and the SP14 asphalt anchors. An alternate adhesive is a commonly available *premium* industrial adhesive with polyurethane.



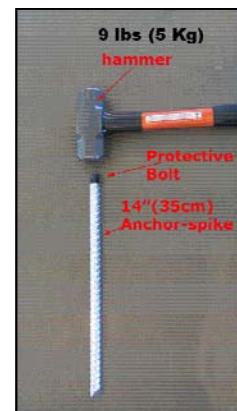
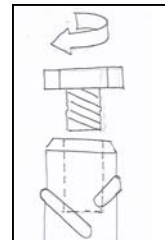
**WARNING: The anchors are 14" (35cm) long. Before drilling into the surface, make sure that there are no cables or other structural elements that may be affected by the drilling.**

## SP14/7 KIT

The spike kit is provided with 7 spikes, 7 sacrificial hex bolts, 7 washers and 7 button-head mounting bolts. The hex head bolts are used when hammering the spike and are there for the protection of the internal thread of the spikes.

## Installation

1. Use a template to mark the location of the anchors. Each of Designated Parking products comes with a custom template.
2. Drill 3/4" (19mm) holes perpendicular to the ground, to a depth of at least 14" (260mm).
3. Apply the adhesive to the hole, filling it about 50%.
4. Protect the anchors' thread by threading the supplied protective *hex-headed* bolts and hand-tighten them to the anchors.
5. Using a heavy hammer, drive the anchors into the ground until the head of the anchor is flush with the asphalt surface.
6. Using a wrench, remove and discard the hex bolts.
7. Thoroughly clean



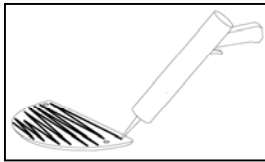
10 Ridge Rd  
West Orange, NJ 07052 USA

Tel: 1.973.669.8214  
Fax: 1.973.669.5161  
Email: [info@dp-corp.com](mailto:info@dp-corp.com)  
WEB: [www.dp-corp.com](http://www.dp-corp.com)

## SP14 Asphalt Anchor Installation Guide Page 2

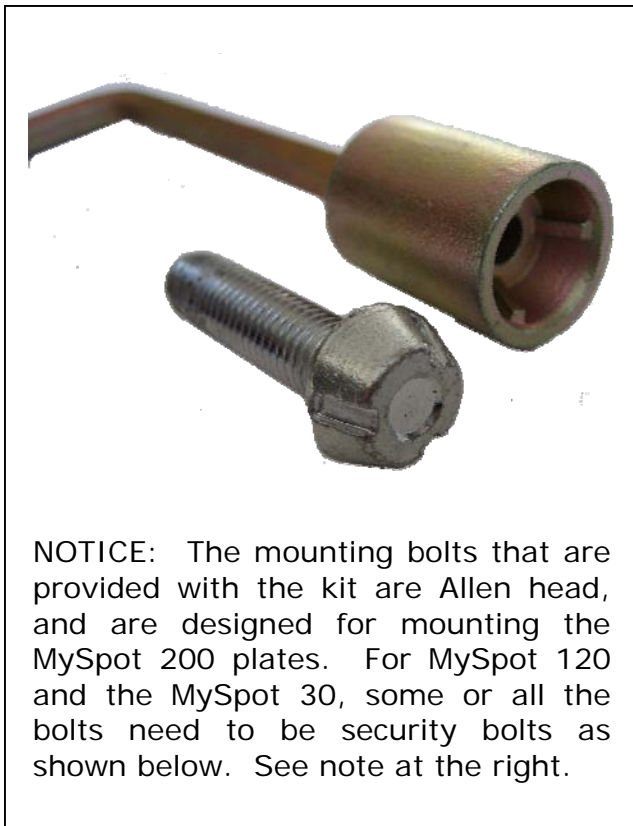
the roadway where the mounting plate is to be installed. The surface must be free of sand, gravel and loose particles.

8. Place the plate over the anchors to make sure that the holes line up. If some holes are off, you may have to drill the plate.
9. Apply 1/8" (4mm) thickness of adhesive to the full surface of the bottom of the plate.
10. Mount the plate and secure with washers and bolts to



the anchors.

11. Use the adhesive to caulk the edge of the plates to prevent water entry under the plates.



**NOTICE:** The mounting bolts that are provided with the kit are Allen head, and are designed for mounting the MySpot 200 plates. For MySpot 120 and the MySpot 30, some or all the bolts need to be security bolts as shown below. See note at the right.

### USE OF SECURITY BOLTS

If you use security bolts to attach mounting plates to the anchors, please be aware that the thread depth in the anchors only accommodates 1" (25mm) bolts length. The security bolts that are provided with the concrete anchors are 2.5" (60mm) long and can not be used with the SP14.

We suggest that you use 2 of the provided Allen screws and one security bolt. Contact Designated Parking to obtain shorter security bolts



10 Ridge Rd  
West Orange, NJ 07052 USA

Tel: 1.973.669.8214  
Fax: 1.973.669.5161  
Email: [info@dp-corp.com](mailto:info@dp-corp.com)  
WEB: [www.dp-corp.com](http://www.dp-corp.com)